

054374

RECEIVED
LARAMIE COUNTY
CHEYENNE, WY.

CERTIFIED LAND CORNER RECORDATION

'89 FEB 21 PM 1 09

DESCRIPTION OF CORNER EVIDENCE FOUND, AND ORIGINAL RECORD (If known)

S.28 S.27
S.33 S.34
T.17N., R.64W.
6th P.M.

Found no evidence of previous monumentation.

G.L.O. Record: Limestone 20"x9"x7", 12" deep, 1 notch on South side, 3 notches on East side. Set by Charles A. Caton, July 9, 1873.

DESCRIPTION OF MONUMENT AND ACCESSORIES ESTABLISHED TO PERPETUATE THE ORIGINAL LOCATION OF THIS CORNER:

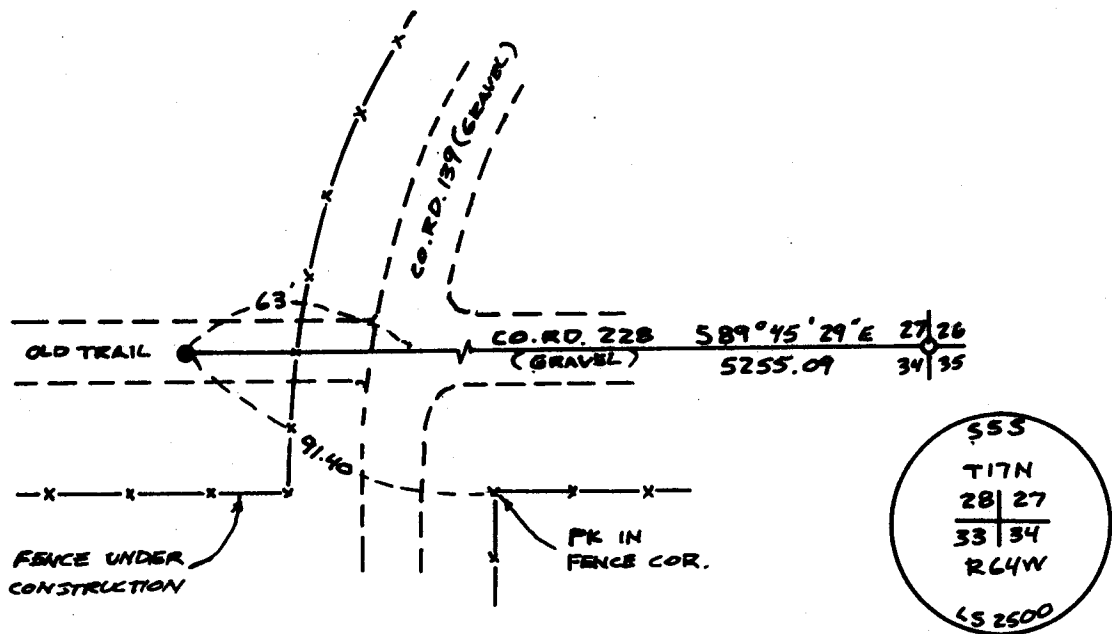
At the corner:

Set 5/8"x18" rebar with 2" Aluminum Cap stamped as shown below. Set 0.4' deep in center of old trail, 41' West of center of road South, 41' North of East West fence, 17' West of North South fence.

Accessories :

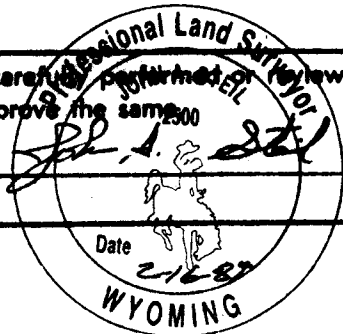
See ties below.

SKETCH, WITH COURSE AND DISTANCE TO ADJACENT CORNER IF DETERMINED IN THIS SURVEY. (May Sketch or Paste Reproduction on Reverse Side.)



I, John A. Steil certify that I have carefully performed and followed the work done on the diagrammed corner as reported on this recordation form and approve the same.

Signature of Surveyor



L.S. 2500
Registration No.

STATE OF WYOMING,
Office of Clerk and Recorder,
County of _____

This "corner record" was filed for record on the _____ day of _____, 19____, was noted on the cross-index plat and is assigned page No. _____, in book No. _____

Joseph C. Whitehead
County Official

Cross Index No.	V-13	T.	17N	R.	64W	Mer.	6th
		T.		R.			Mer.
		T.		R.			Mer.
		T.		R.			Mer.
		T.		R.			Mer.
		T.		R.			Mer.
		T.		R.			Mer.